



NEW PRODUCT RELEASE 2025

SIG-LITE WIRELESS

POWER LINE WARNING SYSTEM



Standard Features

Introducing SIG-LITE, a simpler version of previous Sigalarm Power Line Warning Systems built on 50 years of proven reliability for rugged use in construction, mining, telecommunications, and the aerial lift rental markets worldwide. SIG-LITE is the newest PWD to hit the market in years backed by Sigalarm's internationally recognized brand name.

Distribution power lines are generally classified between (7.2kV -13.5kV) and are estimated to account for over 96% of all overhead HV power lines in the USA. The SIG-LITE unit will automatically default to warn of close proximity to energized distribution power lines*. If work is required around higher voltage Sub-Transmission lines above 13.5kV press the Sub-Transmission button which switches to the alternate transmission setting pre-calibrated for these higher voltages. At any time, the operator can easily reset the alarm point for back to the distribution line setting.

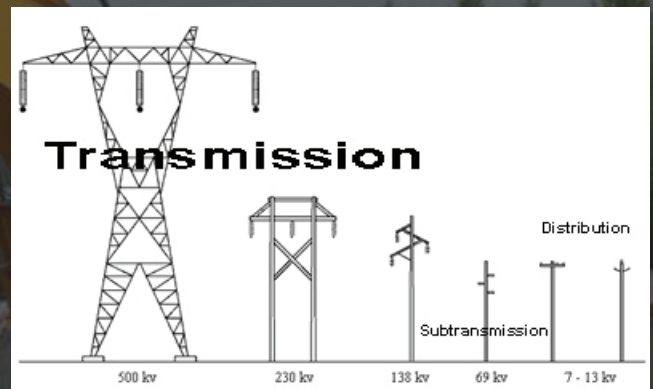
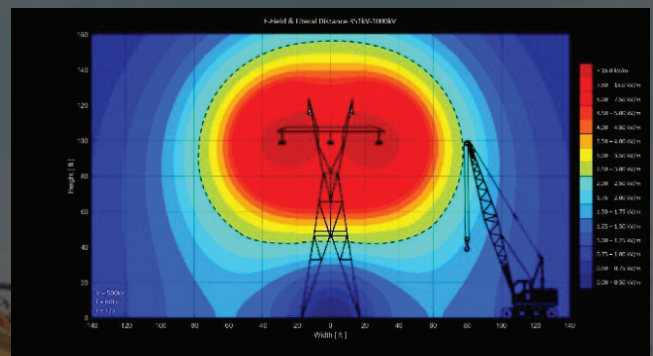
The SIG-LITE base station measures and indicates the sensors proximity to energized HV lines. The alarms are activated when the equipment is in the pre-established proximity set points. Proximity is established using the E-field, which is measured by volts per meter. The LED bar in conjunction with the internal and external speakers are activated at the established proximity to energized HV power lines.

Key features include:

- Low cost
- Easy to install & operate
- E-field Detection-2 preset setpoints
 - Default-Distribution
 - Sub-Transmission (optional)
- Reads 1 or 2 wireless sensors
- Adjustable alarm volume
- Visual LED status bar safe (green), warning (yellow), and danger (red)
- Auto shutdown of equipment available via internal relay outputs
- A domed shield to protect base station and increase LED visibility in direct sun
- Data log all events
- Rugged RAM mounts with universal AMP hole pattern

- IP rated housing, sensors, and connectors
- Standard 1-year mfg warranty
- Extended warranty up to 3 years available

Standard Detection voltage 7200-138kV
HV Power line Detection range 10ft-200ft
Input voltage supply 12-30 v
Small compact size
Control module L 7" X W 3" H 6.25"
Sensors L 4.5" W 2.5" H 1.5"



*SIG-LITE does not measure distance. Proximity alarms are based on E-Field strength 'volts per meter', which can vary in distance at different job sites.

Allied Safety Systems Inc DBA Sigalarm Web: sigalarminc.com
Email: info@sigalarminc.com PH 407-543-0388

WE ARE IN THE BUSINESS OF SAVING LIVES

— MADE IN —
★★★★ USA ★★★★★

sigalarminc.com | 407-543-0388 | 4150 St. Johns Pkwy, Ste 1002, Sanford, FL 32771