



# ***SAVING LIVES***

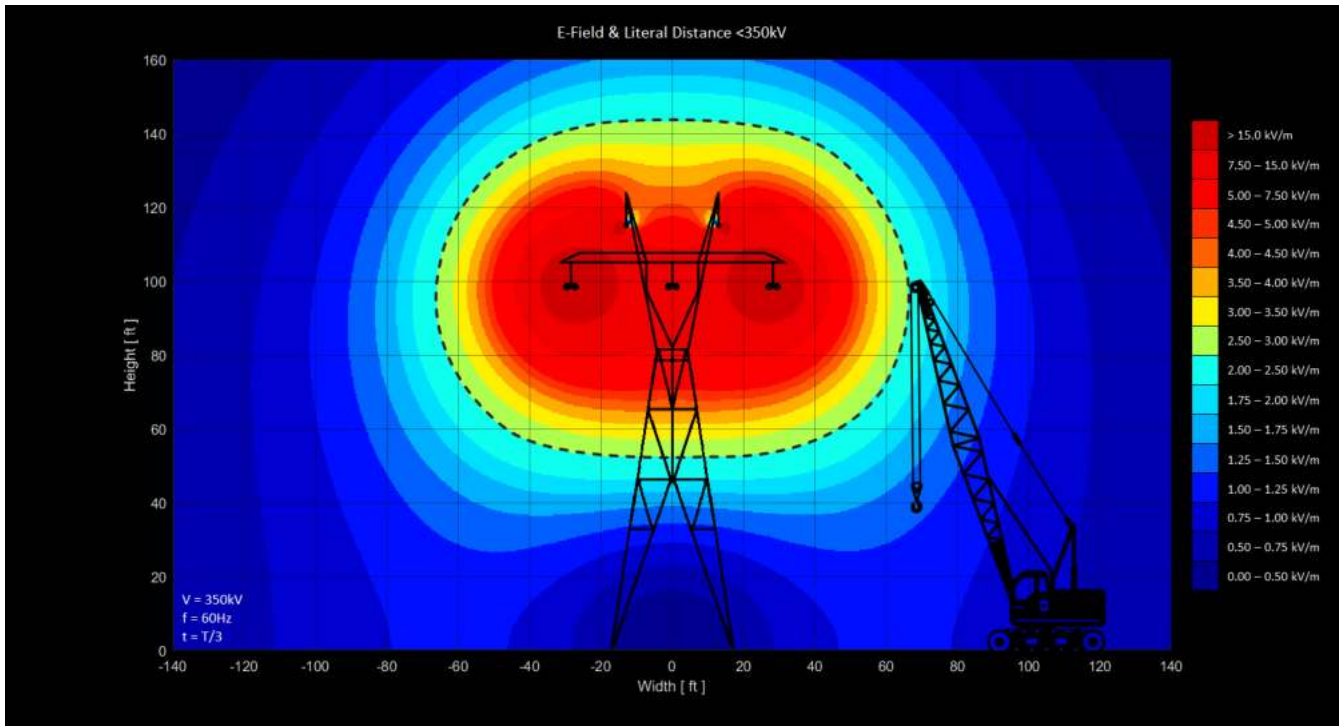
— WITH —

# **HIGH VOLTAGE PROXIMITY ALARMS**



# E-FIELD DETECTION

Our proximity alarms detect E-fields that are present around AC power lines. The E-field strength and shape are dependent upon voltage and other factors. The E-field strength typically weakens as it gets further away from a power line. Proximity alarms warn operators and ground personnel when a boom reaches a certain E-field strength. To set up, an operator will bring equipment to a known distance which as shown below has a corresponding E-field strength.



*\*Actual E-Fields strengths are different at every job site*

Proximity alarms detect E-fields, not OSHA distance regulations, that can change and vary depending on the equipment being operated and other factors. OSHA requires the employer to identify the safe distance.

OSHA "Proximity Alarm," is defined as "a device that provides a warning of proximity to a power line that has been listed, labeled, or accepted by a Nationally Recognized Testing Laboratory in accordance with 29 CFRn1910.7"

## HISTORY OF POWER LINE ACCIDENTS FROM 1960 TO NOW...

**100** Per Year Without  
accidents a Sigalarm System

**0** Per Year With a  
accidents Sigalarm System

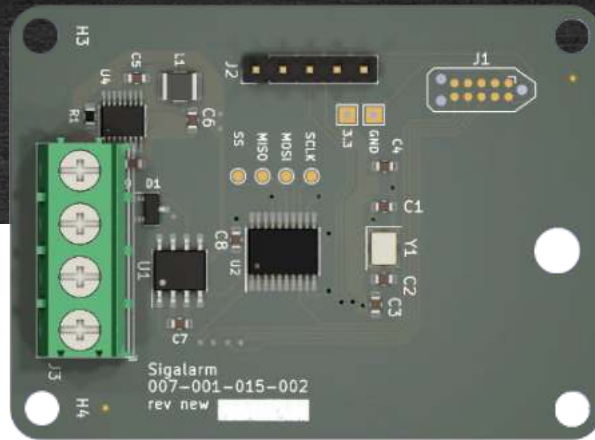


## High Voltage Power Line WIRELESS PROXIMITY WARNING SYSTEM

Sigalarm is designed to alert equipment operators and other workers to the danger of contact with a live power line. This device will help protect them from injury or death, as well as preventing expensive damage to equipment.

### FEATURES:

- ▶ Wireless E-field detection in 50Hz and 60Hz.
- ▶ Between one and twelve wireless sensors integrated into the network.
- ▶ Logs date, time, and warnings.
- ▶ LCD screen on base unit.
- ▶ Relay output for each alarm.
- ▶ Audio warning tones.
- ▶ Adjustable limits for warnings (*default setting is at maximum protection*)
- ▶ 12/24/48 DC Volt operation for base unit.
- ▶ Environmentally resistant to moisture.
- ▶ Operator acknowledgment of all overrides.
- ▶ Customer ability to name sensors.



## Sensor Interface Module (SIM)

The Sigalarm Wireless Interface Module is a bridge between the Sigalarm WS4.0 Wireless Sensors and safety control systems. The raw sensor data is captured and relayed in real-time for minimum-latency operation. The reporting includes sensor identifier, E-Field reading, battery voltage and RF signal strength.

### FEATURES:

- ▶ Wireless interface: proprietary 802.15.4
- ▶ Wireless Frequency: 900mhz band.
- ▶ CANBUS: SAE-J1939, 250kbit
- ▶ UART: 3.3V TTL
- ▶ 3.3 or 12V operation.
- ▶ 35 mW max power consumption.
- ▶ 1hz average update rate.

*\*For more information refer to the Sigalarm Interface User Manual*

# Letter from CEO

*WE ARE IN THE BUSINESS OF SAVING LIVES*

Dear Customer:

Thank you for your commitment to safety and interest in our products. Sigalarm is the most recognized proximity alarm brand worldwide and has over 50 years of impeccable service. We could not have achieved this accomplishment without maintaining a high degree of satisfaction with safety conscience customers like yourself. We look forward to working together with you in reducing unnecessary power line contacts, and creating safer working environments.



Power line contact is a known problem, where the loss of life and property is enormous. Few people realize the difficulty in correctly judging the distance between overhead power lines and booms; due to depth perception issues. Sigalarm's range control warning devices, range limiting, and proximity alarms electronically back up a trained operator who might not realize how close he or she has gotten to an overhead power line. Additionally our products have the unique ability to auto shutdown and stop movement of the boom. Sigalarm products provide the added protection required in most normal equipment operations.

Thousands of Sigalarm systems have been sold worldwide in numerous industries with some units documented in the field for up to 20 years. Compare the life expectancy of a Sigalarm to the cost of a dedicated spotter, and it is clearly the most economical choice. No other option available has been tested or proven to be more beneficial than Sigalarm products in power line warning.

With your commitment to safety, we can help save lives and protect property. We welcome you in joining our existing customers around the world who have enjoyed the peace of mind knowing that they have a Sigalarm power line warning system installed and operating.

We are willing to compromise on everything but quality, integrity, and of course, safety.

As of January 2015 Sigalarm is driving the first ASTM International consensus Standard for Proximity Alarms to ensure product quality, enhance safety, facilitate market access and trade, and build consumer awareness as other manufacturers come to market.

Cordially,

**Lance Burney, CEO**

# ORDER NOW

Outfitting your equipment with a Sigalarm system is a small investment compared to the immeasurable value of your team. Protecting your people is a wise thing to do and in the big picture will save money for your business. Our experts are here for you every day to answer questions and guide you to a safer work environment.



TO PLACE AN ORDER PLEASE CALL US AT **(800) 589-3769**  
OR GO ONLINE TO **WWW.SIGALARMINC.COM**

## Operator Training is Essential

SIGALARM OPERATOR TRAINING CLASSES ARE AVAILABLE THROUGH THE **SIGALARM APP**.

